



Company Presentation

- ✓ Engineering Services
- ✓ Energy Projects
- ✓ Renewables

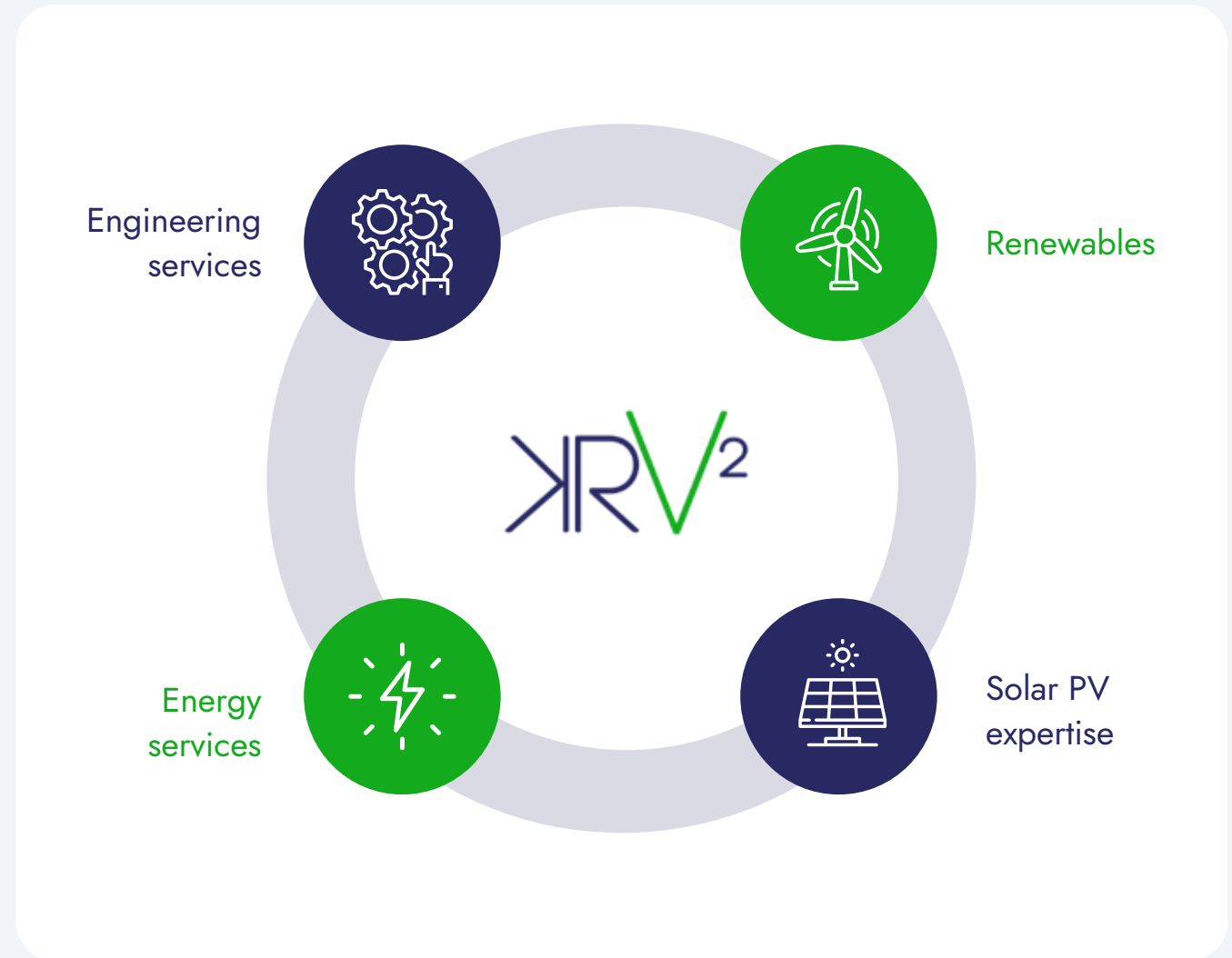


ISO 9001 || ISO 14001 || ISO 26000
ISO 45001 || ISO 55001 || ISO 27001
ISO 27701



Introduction

- ✓ KRV SQUARE S.A. (KRV²) is a well-established Greek company, privately held under Greek and European Union laws. Our privately owned HQ (350m²) is located at Syggrou Avenue at Kallithea-Athens Greece. Our warehouse (3.000m²) is located at Aspropirgos-Greece. Our branch is located at Nicosia, Cyprus.
- ✓ We offer a full end-to-end solution to our clients – including business development, feasibility assessment, preliminary and full detailed project design services together with holistic project evaluation.
- ✓ Through our comprehensive range of consultancy, licensing, engineering, design, project development and operation monitoring services, we enable clients to identify the most cost-efficient Energy system (Solar-BESS) and DataCenter types according to their requirements, while ensuring it is supplemented by proper documentation until commissioning and handover phase.



KRV – A Proud Member of LinoGroup



Lino S.A. - www.lino.gr

2D and 3D printing technologies



Ask2Travel S.A - www.ask2travel.com

Global touristic services



KRV SQUARE S.A. - www.krv.gr

Innovative Renewable Energy Solutions



EntradaTT S.A. - www.aheadrm.com

Innovative software production



ARKIAS ACADEMY PC - www.arkias.gr

Specialized Technical Seminars

KRV² (www.krv.gr) is proud to be a part of LinoGroup (www.linogroup.eu) , a leading holding company with a strong presence in Southeast Europe (Greece-Cyprus-Romania-Bulgaria-Serbia), Israel, and Turkey. As a key member of LinoGroup, KRV² benefits from a robust network, extensive resources, and a shared commitment to innovation and excellence.

102

Total Group employees

€73M

Group Revenues
(Greece, Balkans-SouthEast
Europe, Israel, Turkey)

Lino

Ask2Travel

KRV²

Entrada
Travel Technology

ARKIAS
ACADEMY

KRV² S.A. company is part of LinoGROUP and provides high level services in large scale Energy and MEP projects, more specifically in Renewable Solar projects in Europe, Africa, Australia Middle East and Asia.

The company and its affiliates have good financial basis and expertise in large commercial-industrial (C&I), large-scale ground mounted PV Solar projects, Data Centers and Energy Storage (providing Business Development, EPC services).

The KRV² team has a strong background in development,licencing, engineering, procurement, construction, designing, tendering/auction participation, project management, operation & maintenance monitoring of hundreds MWs of Energy projects in the Renewables and Energy Industry the last 15 years, focusing on advanced technologies, digitalization and AI tools.



KRV SQUARE S.A. (KRV²) is an EPC and energy services company specializing in the **development, licensing, study, construction, operation, and maintenance of medium and large-scale photovoltaic (PV) and electro-mechanical projects.**

The company delivers end-to-end EPC and technical services across the renewable energy value chain, with a strong focus on quality, safety, sustainability, and long-term asset performance.

KRV² actively seeks and develops **strategic collaborations with leading international clients and projects investors , including cooperation frameworks for photovoltaic projects** mainly in Europe and Middle East.

Our operational model is designed to ensure technical excellence, compliance with international standards, and bankability for utility-scale and commercial PV investments.

Corporate Transparency & International Credibility

KRV² is a legally established corporate entity with full regulatory compliance and transparent corporate governance. The company is **registered with Dun & Bradstreet (D-U-N-S® system)**, reinforcing its credibility, financial traceability, and suitability for international partnerships and supply-chain collaborations.

Value Proposition for International Partners

Through structured processes, certified management systems, and experienced engineering team, KRV² offers to international partners:

- Reliable local execution for utility-scale and commercial PV projects
- Full compliance with EU and international technical standards
- Strong HSE and environmental performance culture
- Long-term asset value protection and optimized lifecycle management
- A professional, scalable partner aligned with Tier-1 manufacturers in South-East Europe and Mediterranean.

KRV² positions as a **trusted technical and implementation partner** for global renewable energy leaders seeking consistent quality, reduced execution risk, and sustainable project outcomes in Southern Europe and beyond.



Quality, Safety & Sustainability Governance

KRV² operates under a fully integrated management system certified by TÜV AUSTRIA, demonstrating strict adherence to internationally recognized standards across all core activities.

Certified ISO Standards (Scope: Study, Construction, Maintenance & Operation of Photovoltaic and Electro-Mechanical Projects):

1. **EN ISO 9001:2015** – Quality Management Systems
2. **EN ISO 14001:2015** – Environmental Management Systems
3. **EN ISO 45001:2018** – Occupational Health & Safety Management Systems
4. **EN ISO 55001:2024** – Asset Management Systems
5. **EN ISO 26000:2010** – Social Responsibility Guidance

These certifications confirm KRV²'s commitment to operational excellence, risk management, environmental stewardship, workforce safety, and responsible corporate conduct across all project phases.

KRV SQUARE S.A. is also in the process of expanding its compliance framework with:

6. **ISO/IEC 27001:2022** – Information Security Management Systems (Expected issuance: February 2026)
7. **ISO/IEC 27701:2025** – Privacy Information Management Systems (Expected issuance: February 2026)



CERTIFICATE

Management System as per ISO 55001:2024

In accordance with TÜV AUSTRIA procedures, it is hereby certified that

KRV SQUARE P.C.

314-316, Syggrou Avenue

GR-176 73 KALLITHEA, GREECE

Applies an Asset Management System in line with the above Standard for the following Scope

STUDY, CONSTRUCTION, MAINTENANCE, OPERATION OF PHOTOVOLTAIC AND ELECTRO-MECHANICAL PROJECTS

Certificate Registration No.: 20000250014449

Valid until: 2028-05-22

Maria Agapitou

Head of Management Systems & Products Certification Division

Certification Body at TÜV AUSTRIA

Athens, 2025-05-23

This certification was conducted in accordance with TÜV AUSTRIA auditing and certification procedures and is subject to regular surveillance audits.

TÜV AUSTRIA HELLAS

429, Mesogeion Ave.

GR-153 43 Athens, Greece

www.tuv.austria-hellas.gr

GEMI No: 1650201000

CA000237_A01

Headquarters in Athens bear the responsibility of the Certification decision

ZERTIFIKAT | CERTIFICATE | CERTIFICADO | CERTIFICAT | 証明書 | 인증서

20000250014449

2028-05-22

CA000237_A01

Headquarters in Athens bear the responsibility of the Certification decision

CONFIRMATION

TÜV AUSTRIA

Confirms that the company

KRV SQUARE P.C.

314-316, Syggrou Avenue

GR-176 73 KALLITHEA, GREECE

applies the international guidance ISO 26000:2010 as the framework to integrate corporate social responsibility into the values and practices, for the following scope

STUDY, CONSTRUCTION, MAINTENANCE, OPERATION OF PHOTOVOLTAIC AND ELECTRO-MECHANICAL PROJECTS.

Registration No.: 20452250014268

Valid until: 2028-05-11

Maria Agapitou

Head of Management Systems & Products Certification Division

Athens, 2025-05-12

The assessment was performed according to the relevant Auditing Procedure of TÜV AUSTRIA.

TÜV AUSTRIA HELLAS

429, Mesogeion Ave.

GR-153 43 Athens, Greece

www.tuv.austria-hellas.gr

GEMI No: 1650201000

CA000430_A100

Headquarters in Athens bear the responsibility of the Certification decision

ZERTIFIKAT | CERTIFICATE | CERTIFICADO | CERTIFICAT | 証明書 | 인증서

20452250014268

2028-05-11

CA000430_A100

Headquarters in Athens bear the responsibility of the Certification decision

CERTIFICATE

Management System as per ISO 45001 : 2018

In accordance with TÜV AUSTRIA procedures, it is hereby certified that

KRV SQUARE P.C.

314-316, Syggrou Avenue

GR-176 73 KALLITHEA, GREECE

Applies an Occupational health and safety management system in line with the above Standard for the following Scope

STUDY, CONSTRUCTION, MAINTENANCE, OPERATION OF PHOTOVOLTAIC AND ELECTRO-MECHANICAL PROJECTS

Certificate Registration No.: 20152250014448

Valid until: 2028-05-22

Maria Agapitou

Head of Management Systems & Products Certification Division

Certification Body at TÜV AUSTRIA

Athens, 2025-05-23

This certification was conducted in accordance with TÜV AUSTRIA auditing and certification procedures and is subject to regular surveillance audits.

TÜV AUSTRIA HELLAS

429, Mesogeion Ave.

GR-153 43 Athens, Greece

www.tuv.austria-hellas.gr

GEMI No: 1650201000

IAF

ISO Certification

No. of Certificate 236

CA000237_A01

Headquarters in Athens bear the responsibility of the Certification decision

ZERTIFIKAT | CERTIFICATE | CERTIFICADO | CERTIFICAT | 証明書 | 인증서

20152250014448

2028-05-22

CA000237_A01

Headquarters in Athens bear the responsibility of the Certification decision

Company Presentations KRV² v1

9

More About KRV

The company is an advanced energy consulting engineering firm which offers exceptional Renewable Energy and Energy Storage services that cover holistic solutions for energy (Solar-BESS) and DataCenter projects evaluation, design, planning in regions as Europe, Africa, Middle East and Asia.

Our professionals evaluate critical operating metrics that drive value, processes and procedures to implement appropriate strategies in order to improve final results in a wide variety of energy projects.

With this approach, we create sustainable, measurable improvements in project design, execution schedule, project budgeting and return of Investment in order to enterprise value for our clients understanding the needs of investors, multinational companies and organizations.



Advancing Renewable Energy for a Sustainable Future

Excellence in Service

Maintaining the highest standards in all aspects of our operations, from development to maintenance.



Innovative Solutions

Crafting cutting-edge solutions with advanced technologies, digitalization, and AI tools.



Global Impact

Delivering top-tier energy solutions globally.



Sustainability Commitment

Driving the transition to a sustainable future through renewable energy projects.



KRV² is poised to lead the renewable energy and innovative technologies industry with its unwavering commitment to innovation, sustainability, and excellence in service.



Our Expertise in Energy

Our company is committed to excellence in technical advisory, consulting, and the integration of advanced technologies. With a significant focus on renewables, particularly solar energy, we provide comprehensive solutions to meet the evolving needs of the energy sector.



In-depth technical
evaluations



HV Grids, Substations,
Data Centers



Tailored consulting
solutions



AI-driven
innovations



Cutting-edge EV
chargers



Sustainability
driven



Projects Development & Licensing

- ✓ Design, Study, Full technical review
- ✓ Consulting (Feasibility study, Technical Due Diligence)
- ✓ Project Development, Project Management and Commissioning
- ✓ Renewable energy expert services (Reporting and Troubleshooting of project issues, Contracts negotiations, R&D consultancy, Project evaluation and acquisition, technical seminars)



Engineering, Procurement Construction

- ✓ EPC consultancy services (Engineering, Procurement, Construction)
- ✓ Construction and Project execution
- ✓ Overseeing construction locally as a project manager (for projects outside Greece)
- ✓ Daily Monitoring and Managing Large Scale Projects with in-house Engineers and Managers.



Operation & Maintenance

- ✓ Retrofit, Repower for profit maximization
- ✓ Monitoring and Troubleshooting
- ✓ KPI and Reporting (monthly, semiannually, annually)
- ✓ Providing services with more than 45 active O&M contracts for investors and multinational companies.



Energy Strategy

- ✓ Preliminary and Full detailed Engineering Services (solar projects and energy storage)
- ✓ Technical Advisory from A-Z
- ✓ Project strategy based on Technical, Financial and Feasibility Analysis
- ✓ Analyzing regulatory processes, pricing, supply-and-demand dynamics, fundamental analysis, product sourcing, financial modelling for project strategic steps



Energy Consulting

- ✓ EPC and O&M contract review and negotiations
- ✓ Onsite quality testing and acceptance (e.g. pull-out tests, equipment degradation, IR, drone thermal testing etc.)
- ✓ Operation and Maintenance services focusing on profit maximization
- ✓ Long term quality assessment of core solar and BESS equipment as modules, inverters, mounting structures , batteries , racks



Participation in Auctions

- ✓ Participation in Auctions by through inhouse dedicated department with auction execution specialists
- ✓ Analysis for cost savings as per key performance indicators, AI tools, measurable targets and milestone events to create durable value
- ✓ Our team is involved in the design and implementation of innovative auction solutions used mainly in the energy, BESS, Datacenters and electromechanical projects.

KRV Team – Experience

Our in-house team and its affiliates includes experienced professionals as Electrical engineers, Mechanical engineers, Civil engineers, Projects & Construction managers, Project coordinators and Business developer officers, Financial and Accounting Managers able to developer, design, execute, deliver and operate projects mainly all over Greece and with partners all over Balkans (South-East Europe).



Description	Total years of experience
Electrical/mechanical/ structural studies	42
Renewable and energy projects	32
Consultancy services and seminars	19
Project finance services	12

KRV Team – Solar Projects Engineering Experience

PV plants



380MW, Greece

35MW, UK

153MW, Ukraine

256MW, Australia

**108MW , Middle
East (KSA,UAE)**

100MW, Uzbekistan

21MW, Pakistan

25MW, Cyprus

Total: 1.078 MW



Indicative Projects 2021-2026

- ✓ Engineering Services
- ✓ Full EPC
- ✓ Operation and Maintenance (O&M)

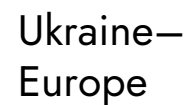


KRV Team – Global Projects Experience

Design, Full EPC and O&M

Over the last years, we provided high level services on many different countries and that gives us the ability to design, execute and deliver the best Engineering and full EPC services to our clients, regardless the difficulty or location of the project.





Indicative Projects – Full Detailed Engineering



112MW



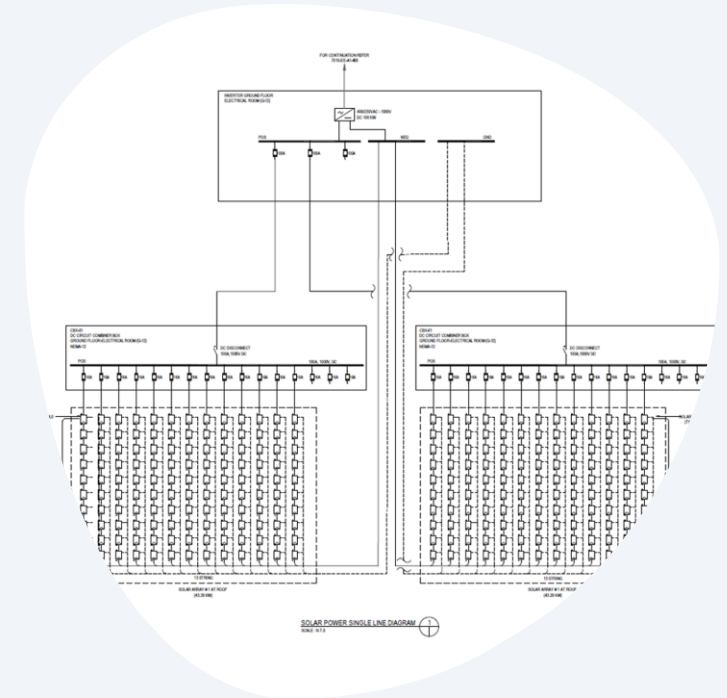
Australia—
Oceania



4MW



UAE—Dubai
Middle East



15MW



Saudi Arabia—
Middle East

Indicative Projects – Project and Construction Mgt



Cluster of total 45MW



UAE-Dubai
Middle East



8MW



UAE-Dubai
Middle East



12MW



UAE-Dubai
Middle East

Indicative Projects – Project and Construction Mgt



Cluster of total 30MW



Peloponnesse –
Ileia



50MW



Peloponnesse -
Megalopolis



2MW



Netherlands–
Europe

Indicative Projects – Project and Construction Mgt



HV/MV 33/150kV-110MVA



Northern Greece –
Substation



54MW



Northern Greece –
Kilikis

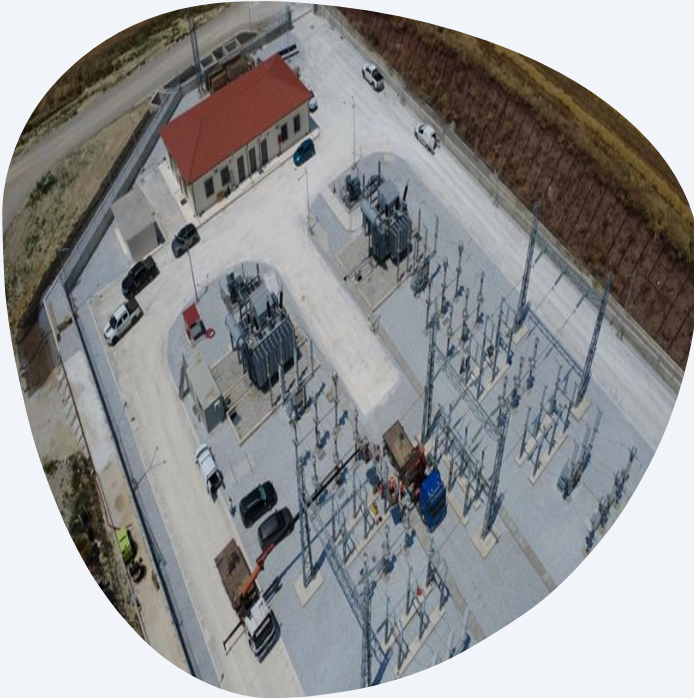


54MW



Northern Greece –
Kilikis

Indicative Projects -Project and Construction Mgt



MV/HV 33/150kV-75MVA



Central Greece -
Substation



53MW



Central Greece -
Larisa



53MW



Central Greece -
Larisa

Indicative Projects – Full EPC and O&M



2 MW



Northern Greece-
Imathia



1 MW



Central Greece -
Trikala



150kW



Peloponnesse-
Korinthos

Indicative Projects – Full EPC and O&M




5 MW

 Cyprus-
Limassol



2 MW

 Central Greece -
Orhomenos



1 MW

 Evoia island

Indicative Projects – Full EPC and O&M



2 MW



Central Greece -
Voiotia



3 MW



Peloponnesse –
Ileia



1 MW



Central Greece-
Trikala

Indicative Projects - Full EPC and O&M



500KW



Evoia Island



500KW



Central Greece -
Karditsa



500KW



Central Greece -
Trikala

Indicative Projects - Full EPC and O&M



500KW



Central Greece -
Trikala



500KW



Central Greece -
Trikala



500KW



Central Greece -
Trikala

Indicative Projects - Full EPC and O&M



500KW



Central Greece -
Karditsa



500KW



Central Greece -
Karditsa



500KW



Central Greece -
Avlida

Indicative Projects - Full EPC and O&M



400KW



Northern Greece —
Kastoria



100KW



Aegina Island



100KW



Aegina Island

Indicative Projects - Full EPC and O&M



100KW



Central Greece —
Schimatari



840KW



Central Greece -
Schimatari



50KW



Kos Island

Indicative Projects - Full EPC and O&M



1.2 MW



Central Greece -
Schimatari



100KW



Attica-
Koropi



240KW



Cyprus -
Limassol

Indicative Projects - Full EPC and O&M



75KW



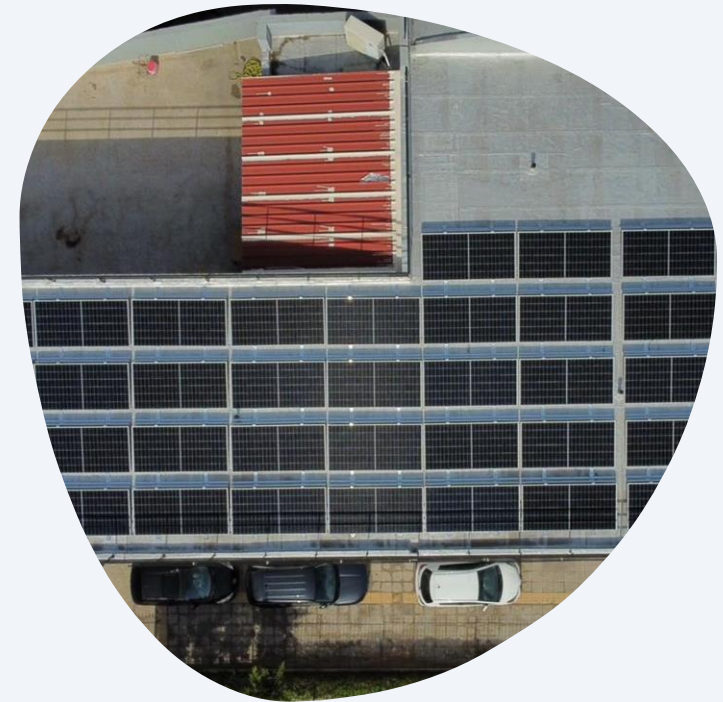
Attica-
Glyfada



100KW



Attica-
Menidi



30KW



Attica-
Peristeri

Indicative Projects - Full EPC and O&M



55kW



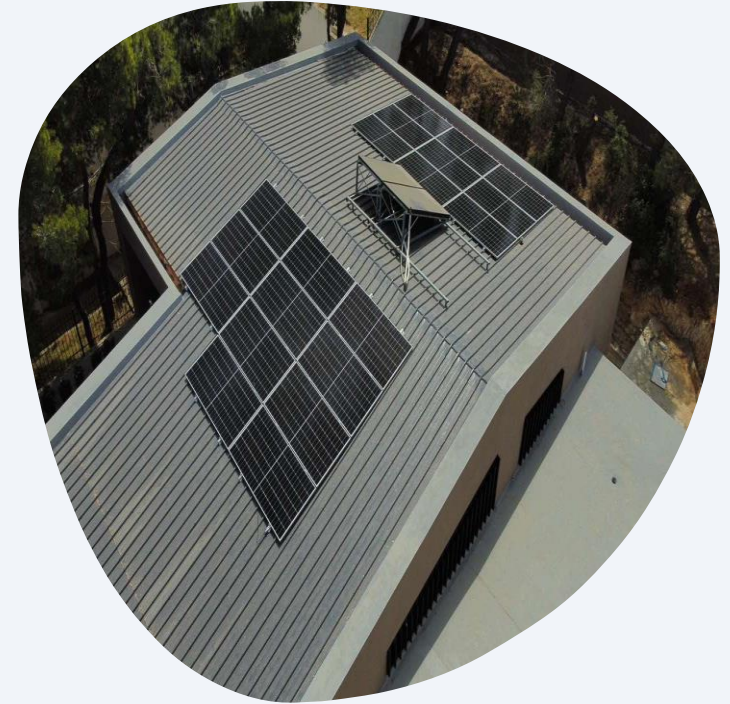
Attica-
Athens



10kW



Attica-
Glyfada



10kW



Attica-
Kifissia

Indicative Projects - Full EPC and O&M



180kW



Attica-
Tavros



60kW



Attica-
Menidi



120kW



Cyprus
Larnaca

Indicative Projects - Full EPC and O&M



150kW



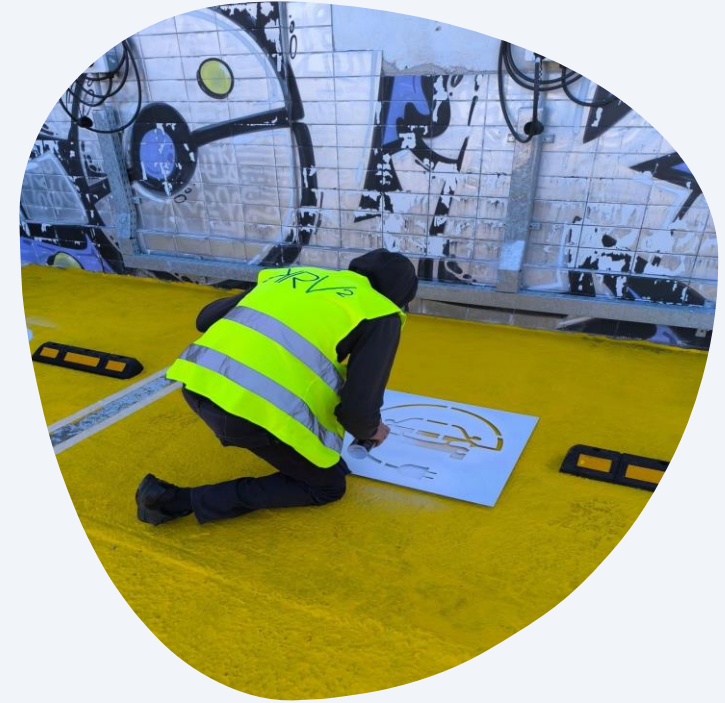
Attica-
Aspropirgos



24kW



Attica-
EV



36kW



Attica-
EV

KRV Team – Member of below organizations



I.E.N.E.
(Institute of Energy of
South Europe) - EU



C.R.E.S.
(Center of Renewables
Energy Sources) - EU



T.E.E.
(Technical Chamber
Greece) - EU



HELAPCO
(Hellenic Association of
Photovoltaic Companies) - EU



National Technical
University of Athens

N.T.U.A.
(National Technical University
Athens Greece) - EU



Society of Engineers -
Dubai , UAE



TRAKHESS
(Department of Planning and
Development) - Dubai, UAE



KRV SQUARE S.A.

314-316 Syggrou Ave.,

PC 17673, Athens – **Greece EU (HQ)**

OFFICE 301 Persefonis 8

PC 2102, Nicosia – **Cyprus EU (branch)**



0030 2109583444



www.krv.gr

www.linkedin.com/in/krv-square-820604185

